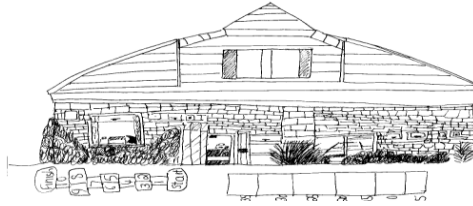


Graveley Primary School
A Church of England (VC) School
Headteacher Mrs Nicola Hand



Ashwell Common, Graveley Nr Hitchin, Hertfordshire SG4 7LJ
Telephone: 01438 351377 Email: admin@graveley.herts.sch.uk

POLICY STATEMENT FOR ADMISSIONS TO

GRAVELEY PRIMARY SCHOOL

As a County primary school, Graveley Primary School admits pupils in accordance with the admissions procedure for all Hertfordshire primary schools.

Graveley Primary School is a 0.5 form entry school which admits up to 16 children into each year group. We have a single entry intake every September.

Parents will normally be sent a leaflet for a primary school place in the autumn preceding your child's admission. This will advise parents on how to apply for a primary place online. The lists used by the County are those of the local health authority and there can occasionally be errors or omissions, often due to people moving house. If you do not receive a pack, please let us know or visit the website – www.hertsdirect.org/admissions

Parents who are considering sending their child to Graveley Primary School are warmly invited to visit us. Please contact the school office if you would like to arrange a visit.

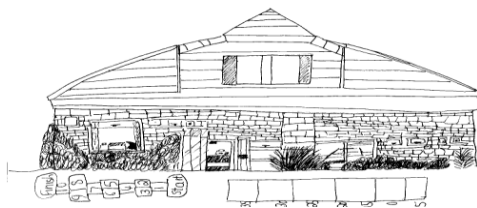
Determined Hertfordshire County Council's oversubscription criteria:

In the event of the school being oversubscribed, places will be offered in the following priority order:

1. **Children Looked After and Post Looked After Children** but ceased to be so because they were adopted (or become subject to a child arrangements or special guardianship order).
2. **Medical or Social:** children for whom it can be demonstrated that they have a particular medical or social need to go to the school. A panel of officers will determine whether the evidence provided is sufficiently compelling to meet the requirements for this rule. The evidence must relate specifically to the school applied for under Rule 2 and must clearly demonstrate why Graveley Primary is the only school that can meet the child's needs.



Graveley Primary School
A Church of England (VC) School
Headteacher Mrs Nicola Hand



Ashwell Common, Graveley Nr Hitchin, Hertfordshire SG4 7LJ
Telephone: 01438 351377 Email: admin@graveley.herts.sch.uk

3. **Linked School:** in the case of Junior schools, children who attended the linked infant school at the time of their application. This rule applies to pupils who are currently attending Infant school which has a linked Junior school – this is not the case for **Graveley Primary School**.
4. **Sibling:** children who have a sibling on the roll of the school. This applies to Reception through to Year 5 at Graveley Primary School.
5. **Nearest School:** children for whom it is their nearest community or voluntary controlled school or an own admitting school or academy using Hertfordshire County Council's admission rules.
6. **Distance:** children who live nearest to the school. If your child does not qualify under Rule 5, they will be under Rule 6.

These rules are applied in the order they are printed above. If more children qualify under a particular rule than there are places available, a tie break will be used by applying the next rule to those children. Where there is need for a tiebreaker where two addresses measure the same distance from a school, in the case of a block of flats, the lowest door number will be deemed the nearest as logically this will be on the ground floor and therefore closer. If there are two identical addresses of separate applicants, the tiebreak will be random.

For details of the County Admissions Policy and how it is applied, please go to – www.hertsdirect.org/admissions

